

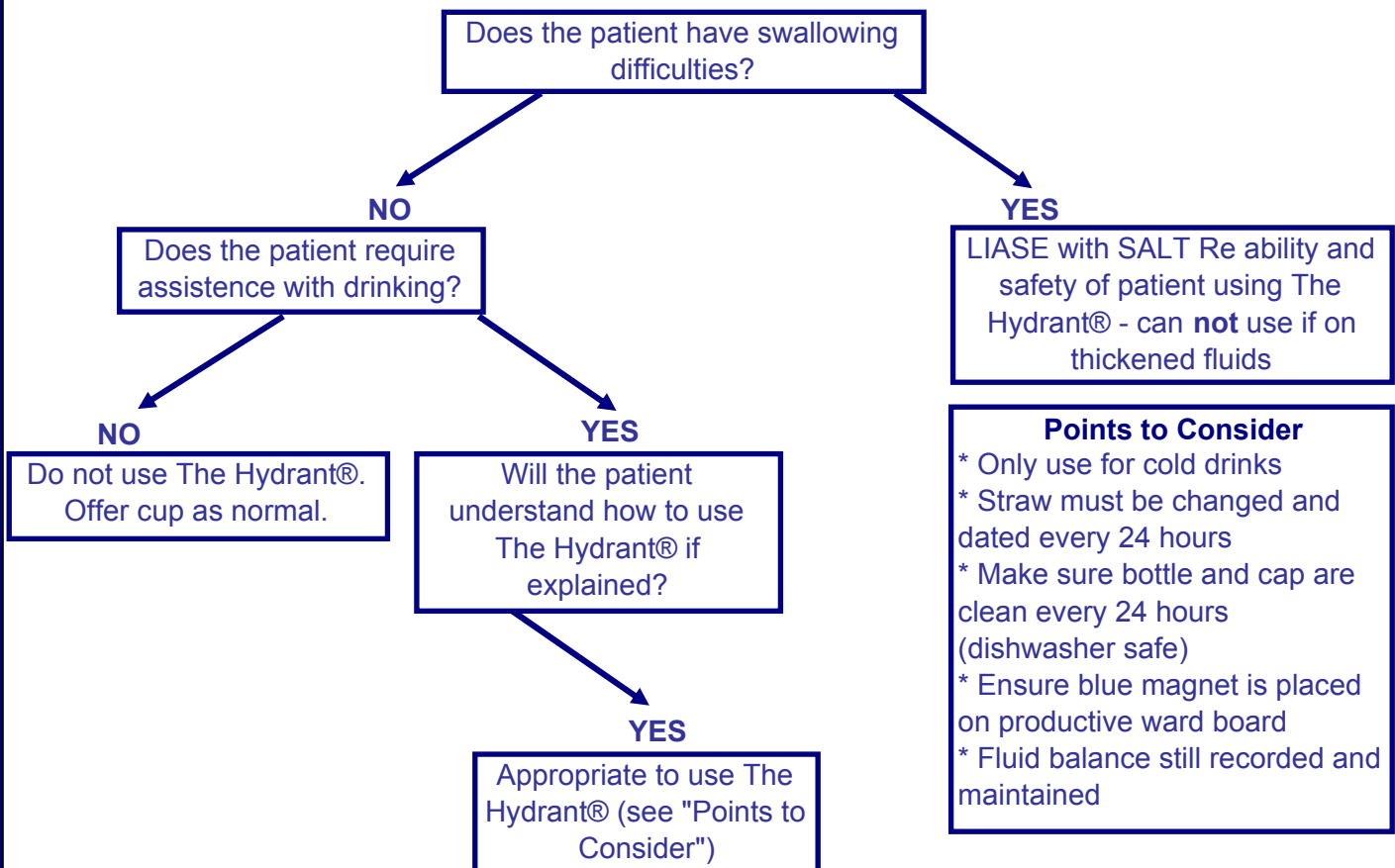
# How To Use The Hydrant®



The Nurse or Carer should ensure that the user is familiar with the following:

- The Hydrant® is a medical device designed to prevent dehydration in vulnerable groups.
- The ability of the patient / user to use The Hydrant should be confirmed by the nurse/ carer. See example of assessment below from Jupiter Ward, Great Western Hospital, Swindon – UK
- Rinse The Hydrant® before using
- Remove all packaging and fill the bottle with fluid, replace the cap and slide the tube through the cap into the bottle until it reaches the bottom
- Check bite valve is securely attached to the drinking tube before use
- Hang or clip The Hydrant® securely on a bed, chair, wheelchair etc so that the tube easily reaches the user to enable independent use
- Instruct the user to place the bite valve in the mouth in between the teeth and bite down to open the valve and suck to drink- it's worth practicing this with your fingers to see how it works. The bite valve opens under pressure and closes when released, so there is no leakage.
- If The Hydrant® is positioned above head height then once fluid is in the tube it becomes a siphon and no further sucking is needed, simply bite the valve to control the flow
- When the user has finished drinking, they should release the bite valve. It is a non-return, non-drip, valve and will close and seal when released but will retain fluid in the tube
- The clothing clip attaches the tube to clothing, or other places, as required
- Do not use The Hydrant® for HOT fluids. Cold or warm liquids only
- Not for dispensing of medicines
- Do not hang on hot surfaces like radiators

## Jupiter Ward - The Hydrant® Assessment



**Points to Consider**

- \* Only use for cold drinks
- \* Straw must be changed and dated every 24 hours
- \* Make sure bottle and cap are clean every 24 hours (dishwasher safe)
- \* Ensure blue magnet is placed on productive ward board
- \* Fluid balance still recorded and maintained